

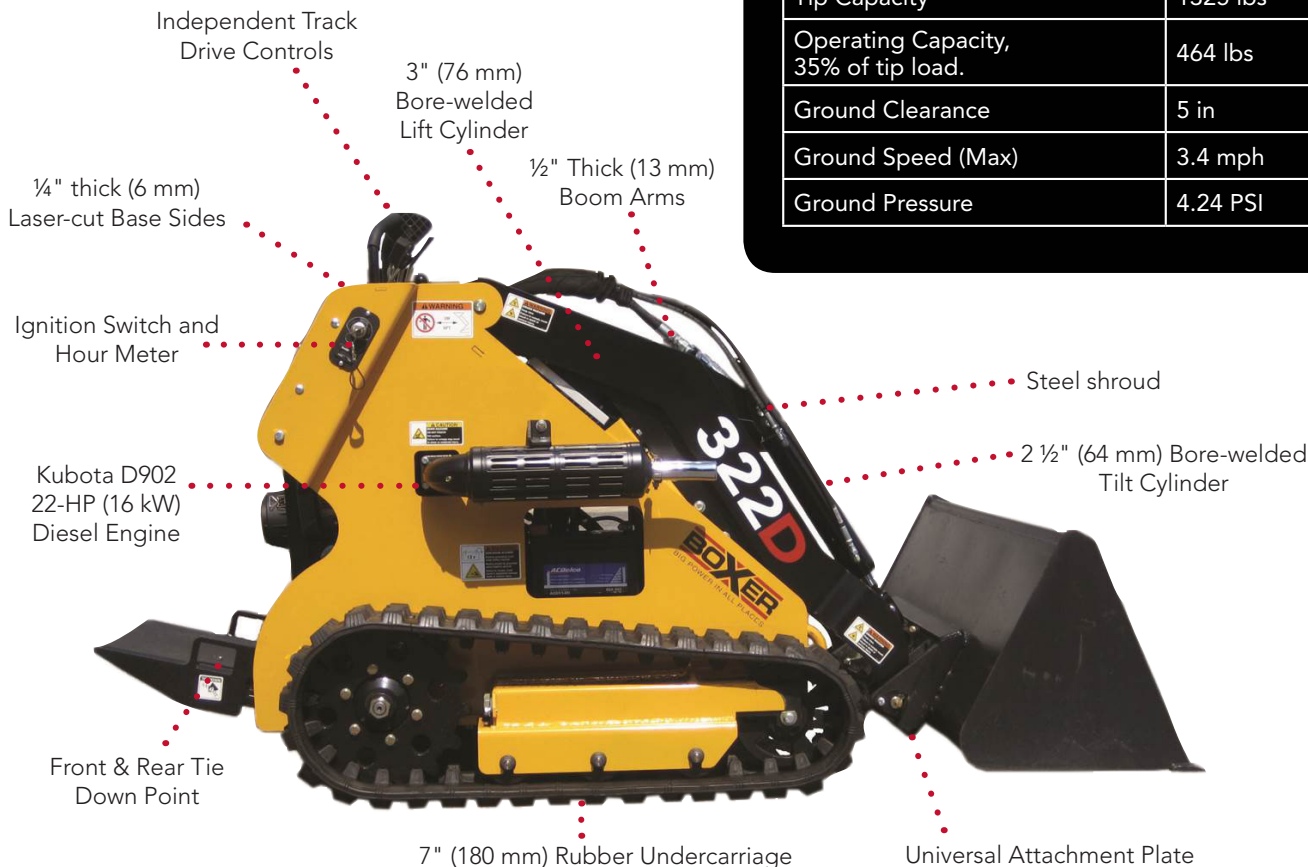
BOXER® 322D

Model Specifications

Engine System	US	Metric
Engine	Kubota	Kubota
Cooling System	Liquid	Liquid
Horsepower	22.0 HP	16.4 kW
Fuel Type	Diesel	Diesel
Fuel Capacity	4.5 Gallons	17 Litres
Hydraulic Capacity	16 Gallons	60.6 Litres
Hydraulic Flow (Combined)	12.4 GPM	47 LPM
Hydraulic Flow (Aux)	9.4 GPM	35.6 LPM
Hydraulic Flow (Drive)	3.0 GPM	11.4 LPM
System Pressure	3000 PSI	20684 kPa

Units	US	Metric
Track Gauge	27.5 in	699 mm
Track Width	7 in	180 mm
Weight (No Attachment)	1900 lbs	862 kg
Length (w/out Bucket)	68 in	1727 mm
Length (w/Bucket)	93 in	2362 mm
Width (Overall)	34.5 in	876 mm
Height (Overall)	49 in	1245 mm
Height (Fully Raised)	92 in	2337 mm
Hinge Pin Height (Fully Raised)	70 in	1778 mm
Dump Height	54 in	1372 mm
Dump Angle	34 °	34 °
Reach	28 in	711 mm
Tip Capacity	1325 lbs	601 kg
Operating Capacity, 35% of tip load.	464 lbs	210 kg
Ground Clearance	5 in	127 mm
Ground Speed (Max)	3.4 mph	5.5 km/h
Ground Pressure	4.24 PSI	29.2 kPa

Model Features



Updated 9/3/15